

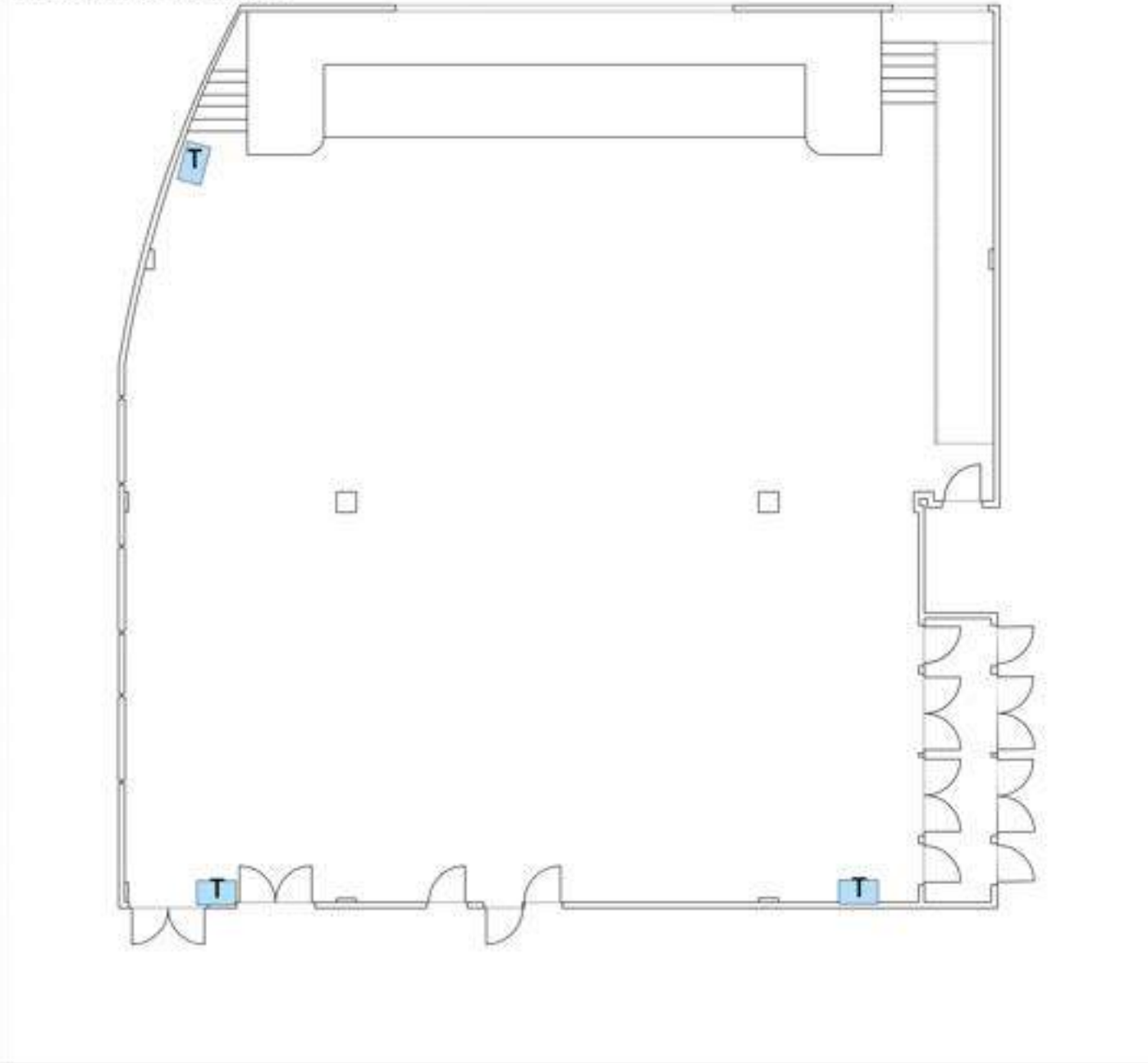
# **Assembly Room**

Event Date:

Event Name:

Facilities Setup Time:

Assembly Room

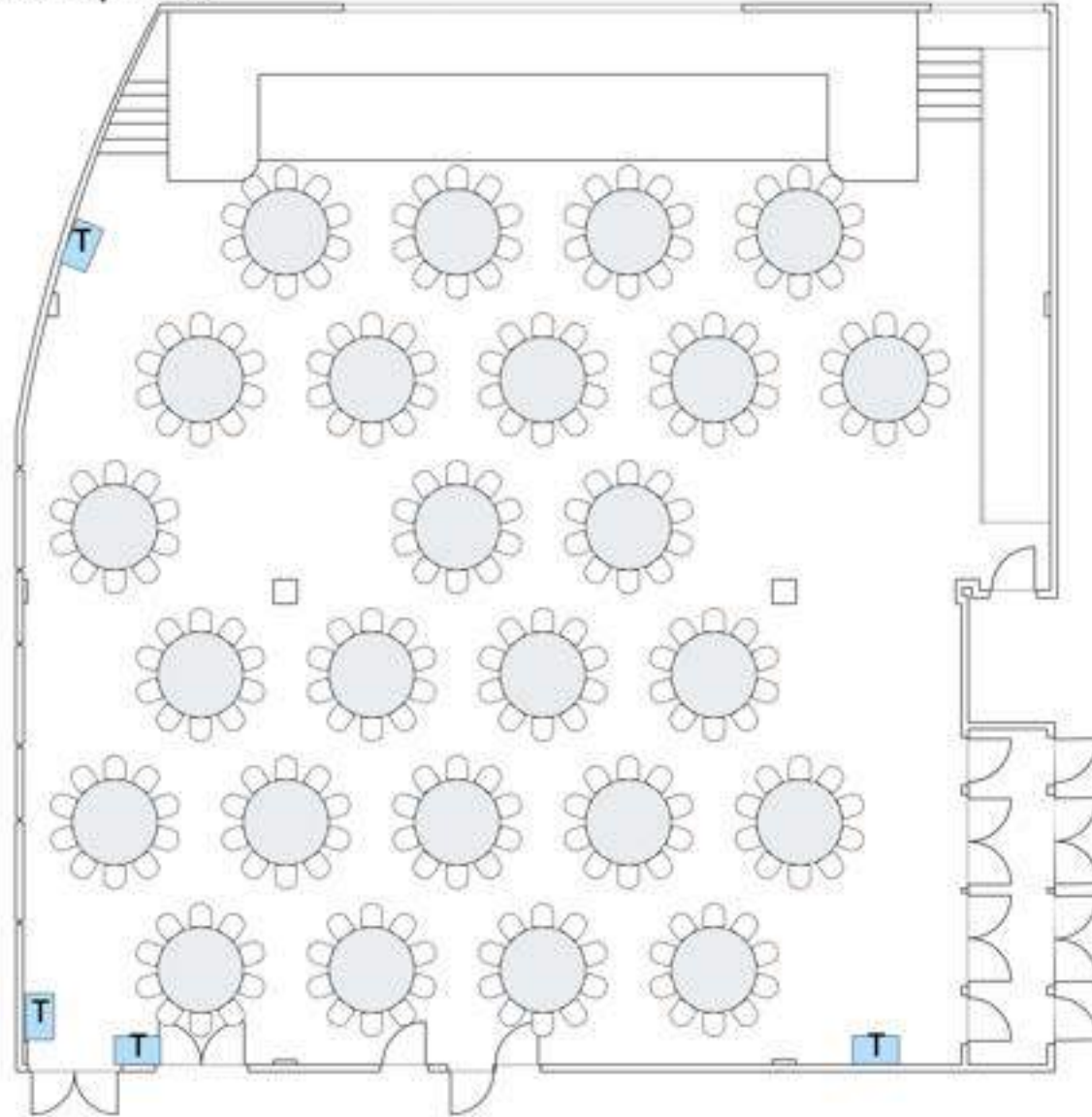


5 Feet

Standing Room: 500

Event Date:  
Event Name:  
Facilities Setup Time:

### Assembly Room

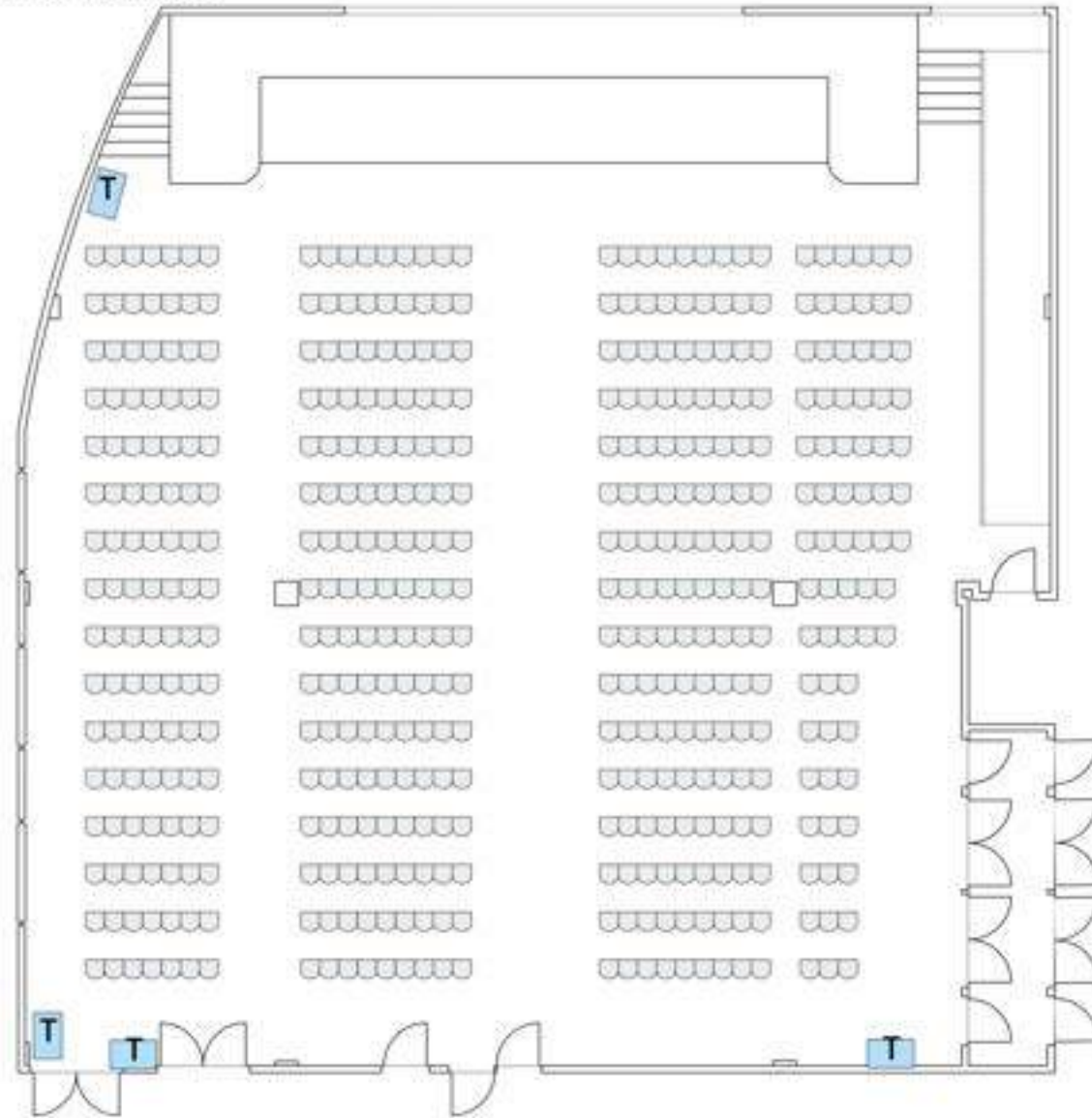


5 Feet

Max Rounds: 25 tables, 10 chairs each

Event Date:  
Event Name:  
Facilities Setup Time:

### Assembly Room

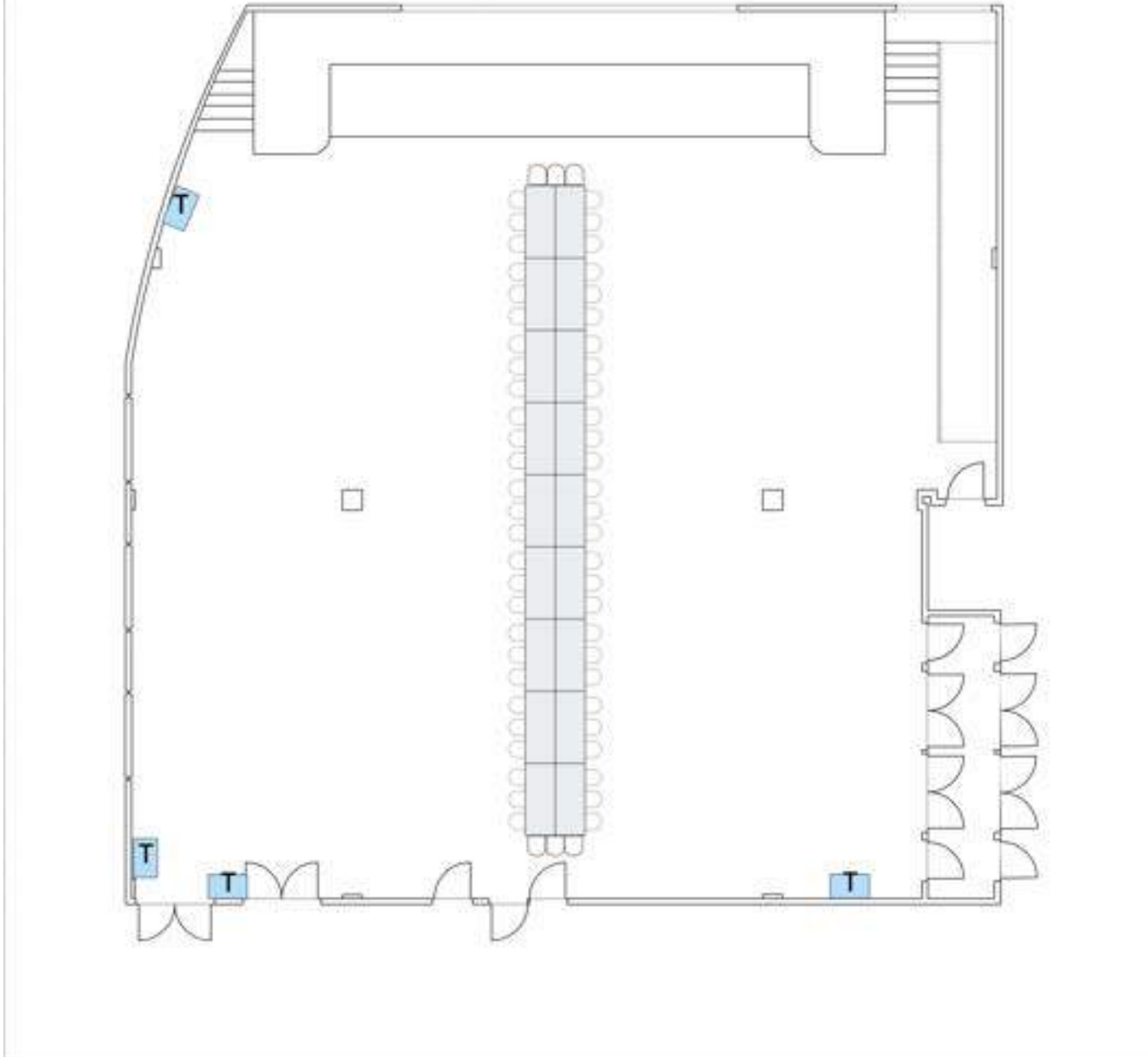


5 Feet

Max Lecture: 473 chairs

Event Date:  
Event Name:  
Facilities Setup Time:

# Assembly Room

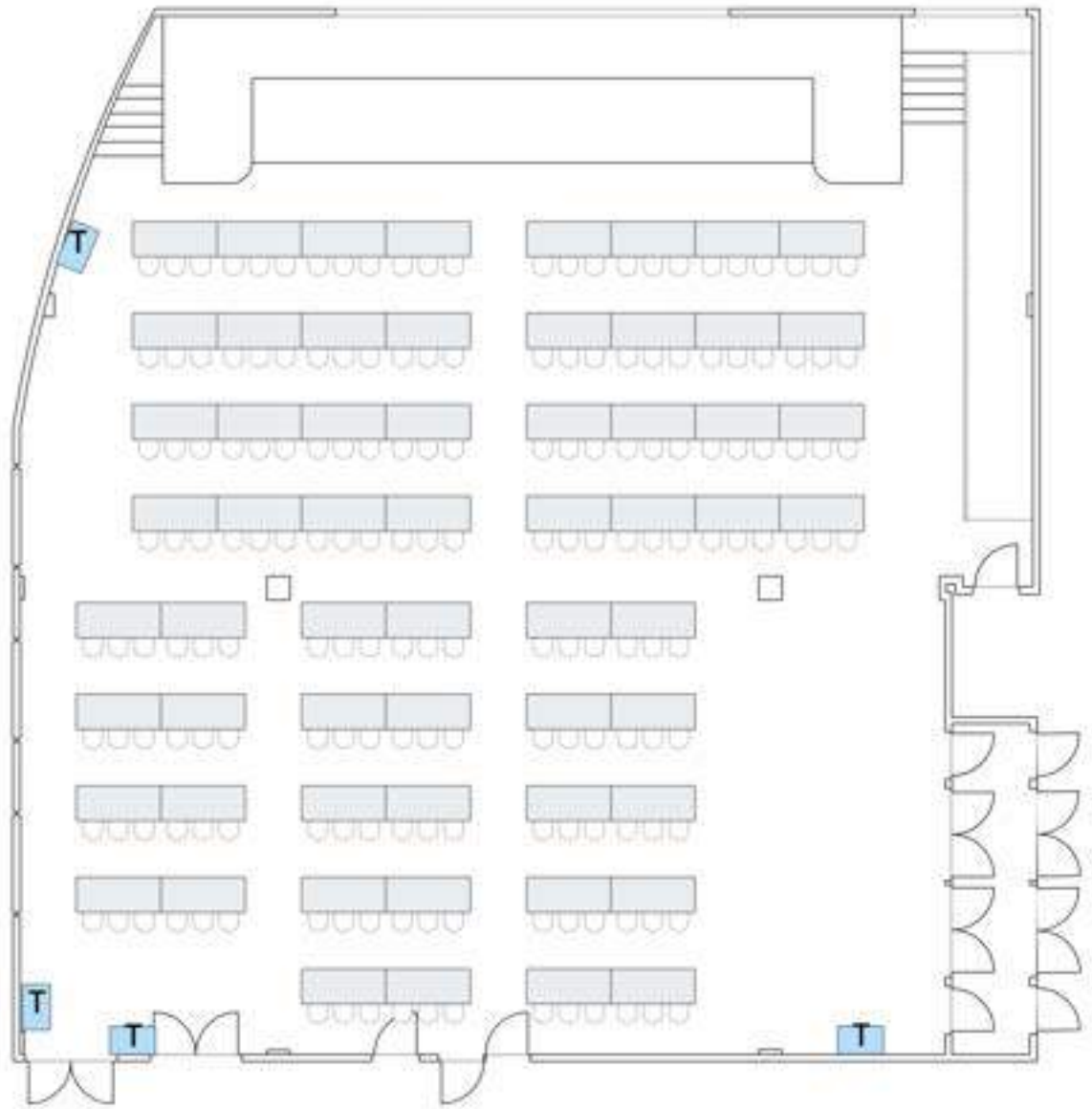


5 Feet

Max Conference: 18 tables, 60 chairs

Event Date:  
Event Name:  
Facilities Setup Time:

Assembly Room

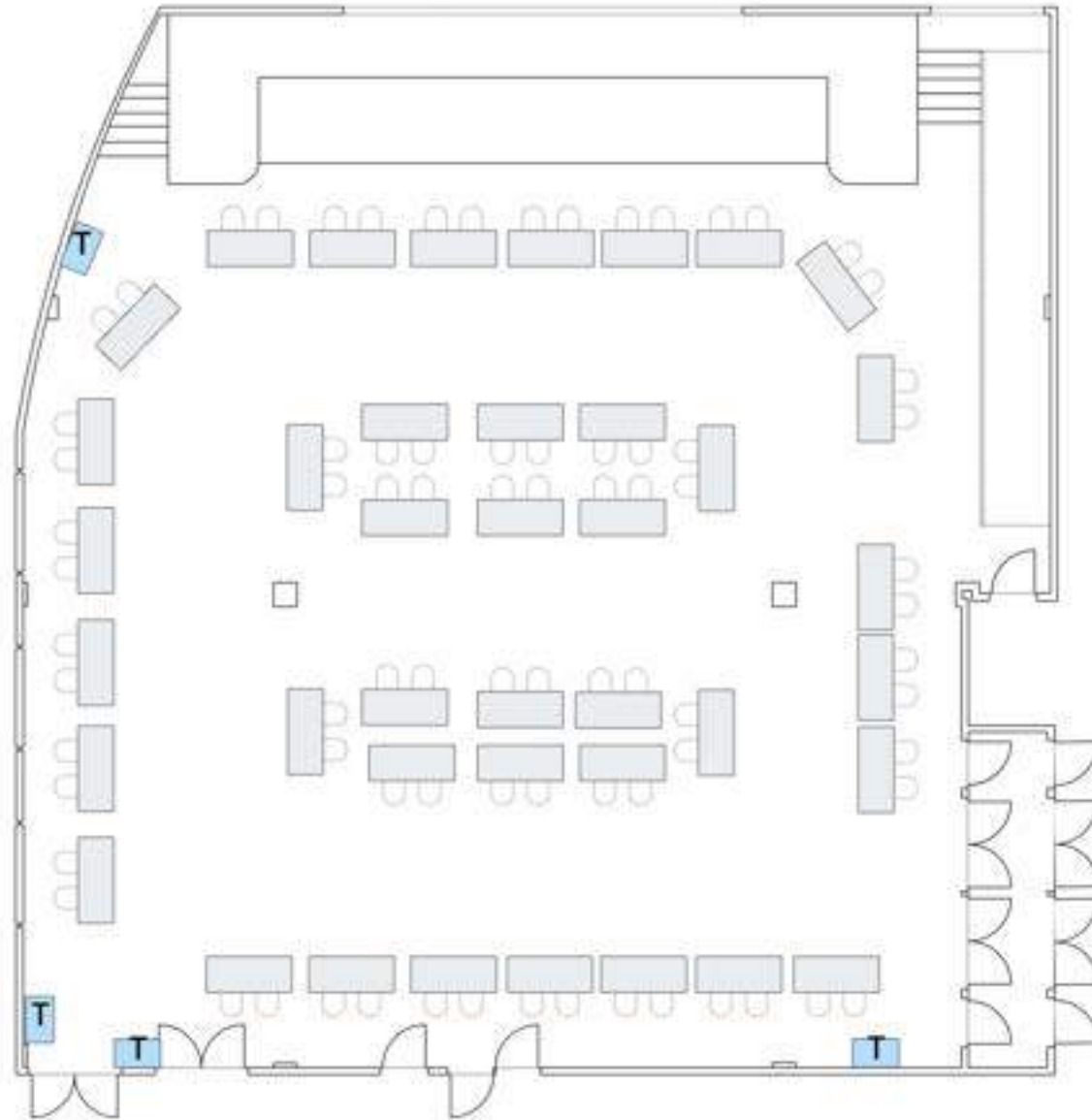


5 Feet

Max Classroom: 60 tables, 180 chairs

Event Date:  
Event Name:  
Facilities Setup Time:

### Assembly Room

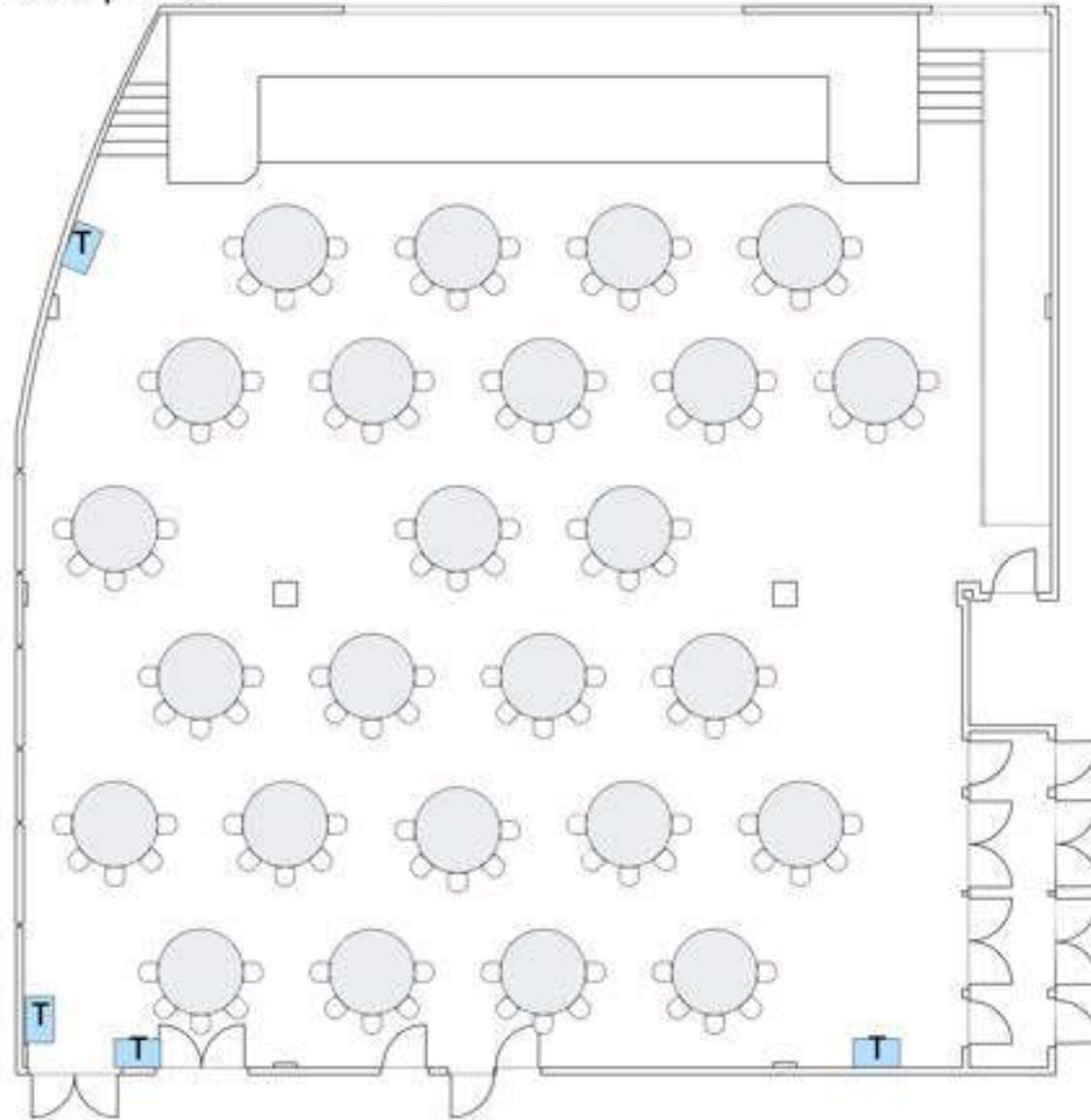


5 Feet

Max Fair: 40 tables, 80 chairs

Event Date:  
Event Name:  
Facilities Setup Time:

### Assembly Room



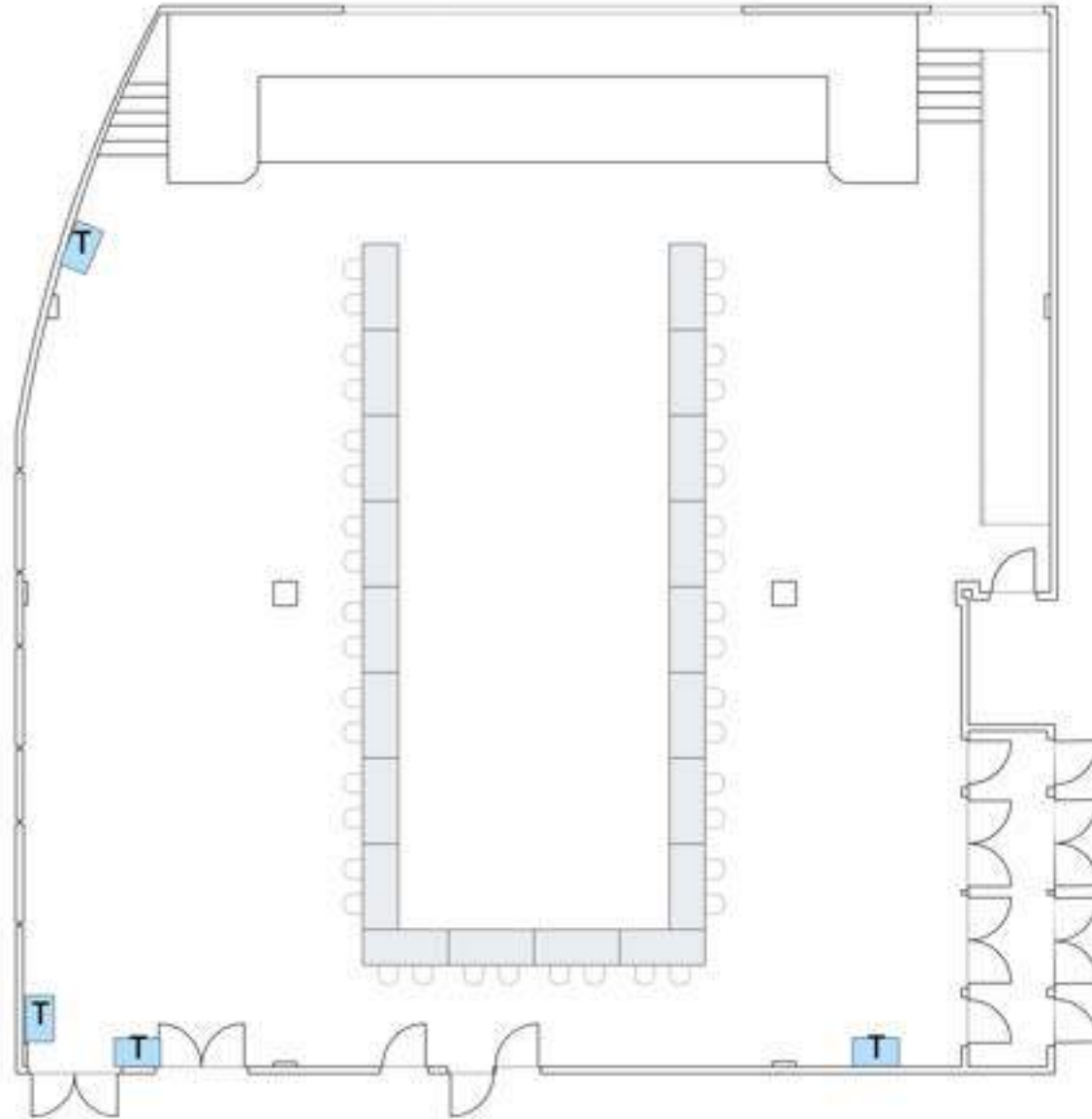
5 Feet

Max Crescent Rounds: 25 tables, 5 chairs each



Event Date:  
Event Name:  
Facilities Setup Time:

### Assembly Room

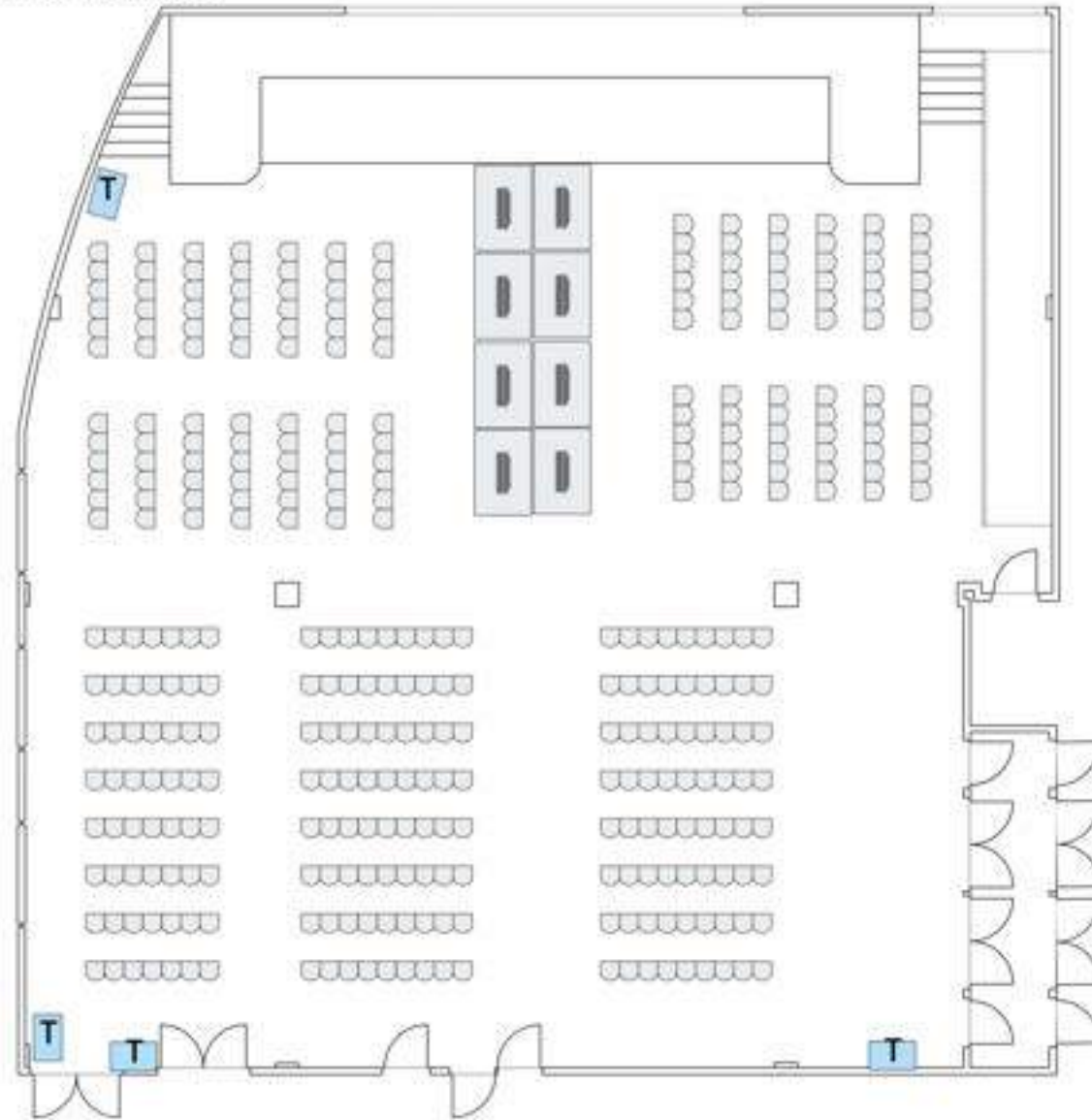


5 Feet

Max U-Shaped Conference: 20 tables, 40 chairs

Event Date:  
Event Name:  
Facilities Setup Time:

# Assembly Room



5 Feet

Max Lecture with Runway: 356 chairs